

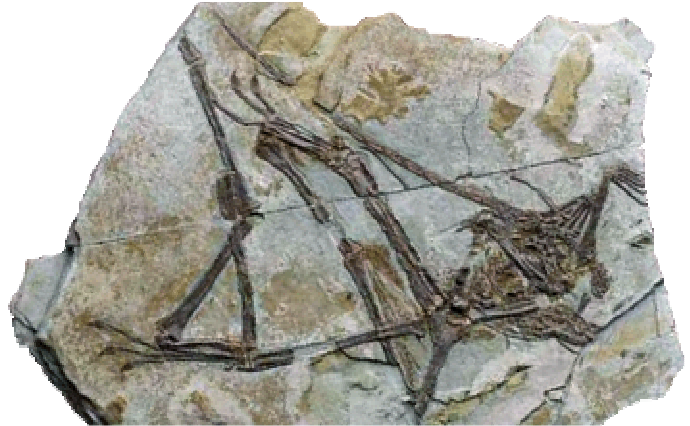


## The Pterosaur Database

### Changchengopterus pani

A rhamphorhynchoid pterosaur found in Qinglong County, Hebei Province in the Tiaojishan Formation. This pterosaur shares characteristics of the species *Dorygnathus*.

**Holotype:** CYGB 0036



Lü, J. **2009**. A new non-pterodactyloid pterosaur from Qinglong County, Hebei Province of China. *Acta Geologica Sinica* (English Edition), **83**(2): 189-199.

**Abstract:** A new basal non-pterodactyloid pterosaur, *Changchengopterus pani* gen. Et sp. Nov., is erected, on the basis of a nearly complete postcranial skeleton. The new taxon is distinguished by relatively short extensions of the prezygapophyses, postzygapophyses and haemal arches of the caudal vertebrae; a humerus that has a subtriangular deltopectoral crest; limb elements that decrease in length in the following order: ulna > wing-phalange 2 > wing-phalange 3 = wing-phalange 1 > humerus > tibia > femur > wing-metacarpal. Phylogenetic analysis suggests that *Changchengopterus* is a basal member of rhamphorhynchoids, and more closely related to *Dorygnathus* than to other rhamphorhynchoids. The geological age of the *Changchengopterus*-bearing sediments is no later than the end of the Late Jurassic and it is possible Middle Jurassic.