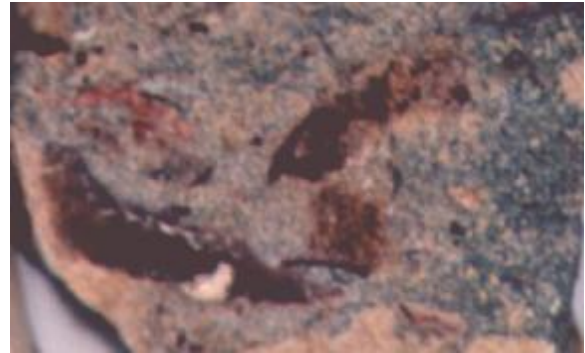


The Pterosaur Database

The Stonesfield Slate, U.K.

The Stonesfield Slate is a deposit within the United Kingdom that has been poorly studied over the years. Any pterosaur remains that have been found there have generally been classified as the Genus *Rhamphocephalus*. Since the majority of the fossils found are single disassociated bones or fragments of bones, this practice is something of a dumping ground for indeterminate fossils.

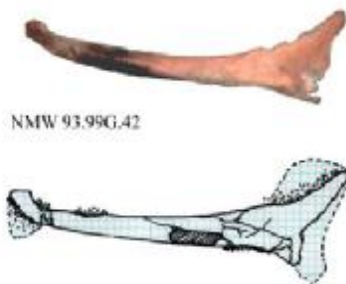


Anurognathid Jaw bone

Whilst there have been some very good papers on individual fossils from these deposits, there are hardly any papers that cover the Stonesfield pterosaurs as a whole. One clear example is;

Whalley G., **2000**, Pterosaurs of the English Middle Jurassic, Thesis submission, School of Earth, Environmental and Physical Sciences, Portsmouth University, BSc (Hons) in Palaeobiology and Evolution.

Here are some observed examples of pterosaur remains that are not *Rhamphocephalus*.



Dimorphodontid Humerus



Unusual coracoid



Pterodactyl type wing bones