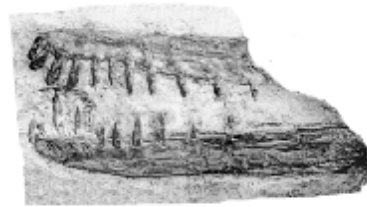




The Pterosaur Database

Brasileodactylus araripensis

A jaw fragment (10 cm) showing teeth and curved slightly upwards, from the Cretaceous Santana Formation of the Araripe Plateau, Brazil. (Kellner 1984)



Kellner A. W. A., **1984**, Ocorrencia de uma mandibula de pterosauria (*Brasileodactylus araripensis*, nov. gen.; nov. sp.) na Formacao Santana, Cretaceo da Chapada do Araripe, Ceara-Brasil. Anais XXXIII Cong. Brasil. de Geol. pp. 578–590. Rio de Janeiro.

