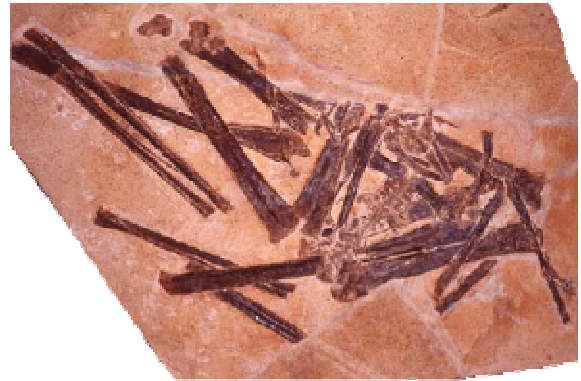


Arthurdactylus conan-doylei

Large pterosaur from the Chapada do Araripe, Aptian, Santana Formation, Brazil. Missing skull and cervical vertebrae, estimated wingspan 4.6 metres (Frey & Martill 1994). There is a possibility that this species may be assigned to the Ornithocheiridae.

Holotype: SMNK-1132-PAL



Frey E. and Martill D. M., **1994**, A new Pterosaur from the Crato Formation (Lower Cretaceous, Aptian) of Brazil. *Neues Jahrbuch für Geologie und Paläontologie, Abhandlungen*. 194, 379–412.